

## Safety Instructions



0, 1, 2, 4, 6, 7, 8, 9, 11, 15,  
22, 25, 27



Info Hotline 

+49 (0) 5041 998 389

Mon. - Do. 7<sup>00</sup> - 20<sup>00</sup>

Fr. 7<sup>00</sup> - 17<sup>00</sup>

Paulmann Licht GmbH

31832 Springe/Germany

[www.paulmann.com](http://www.paulmann.com)

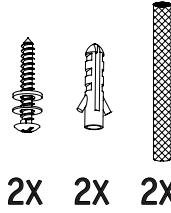
Art.-Nr.:  
70149

(+MA 173)

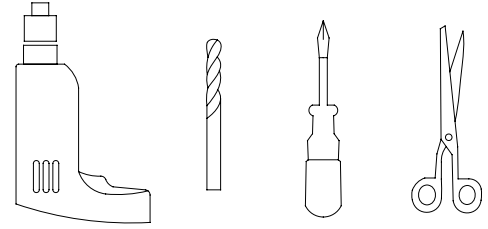
PSP 03/10



Incl.

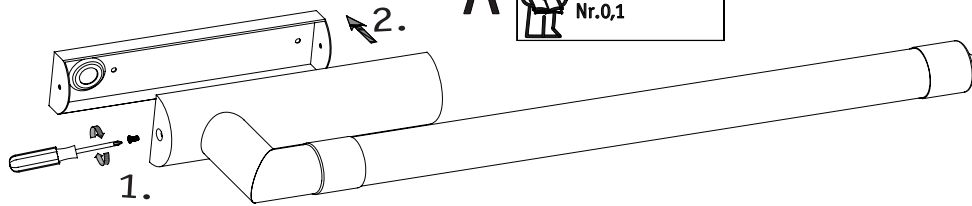


2X 2X 2X



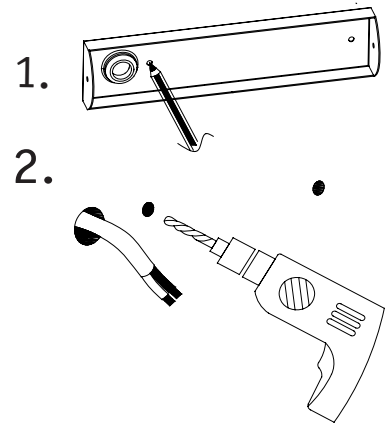
**A**

Safety Instructions  
Nr.0,1



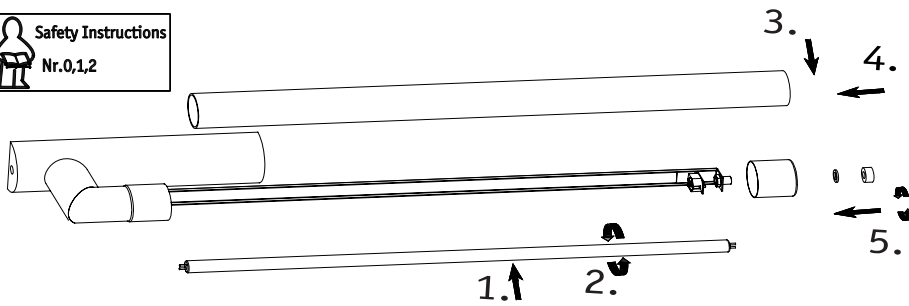
**B**

Safety Instructions  
Nr.0,1



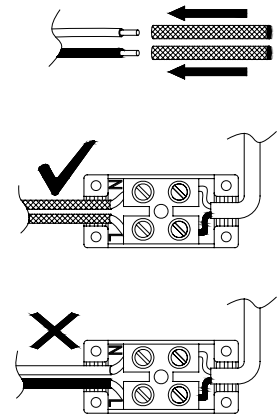
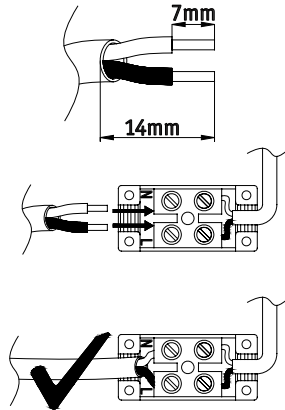
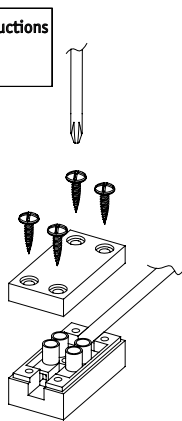
**C**

Safety Instructions  
Nr.0,1,2



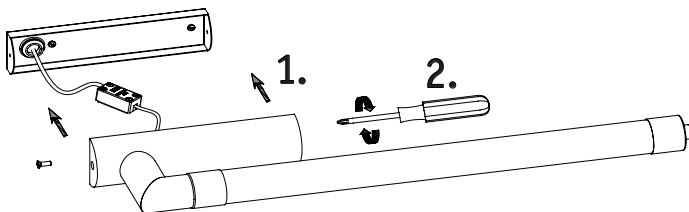
**D**

Safety Instructions  
Nr.0,1,4



**E**

Safety Instructions  
Nr.0,1



**F**

A,B,D,E

C

